

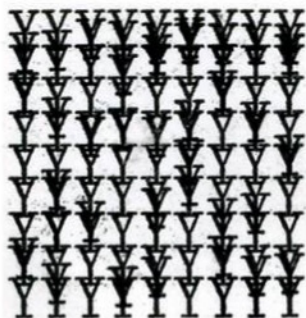
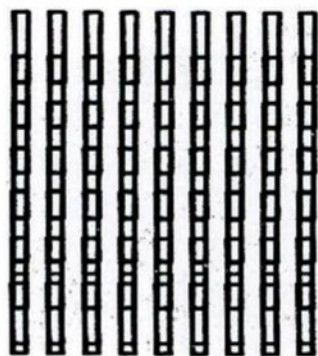


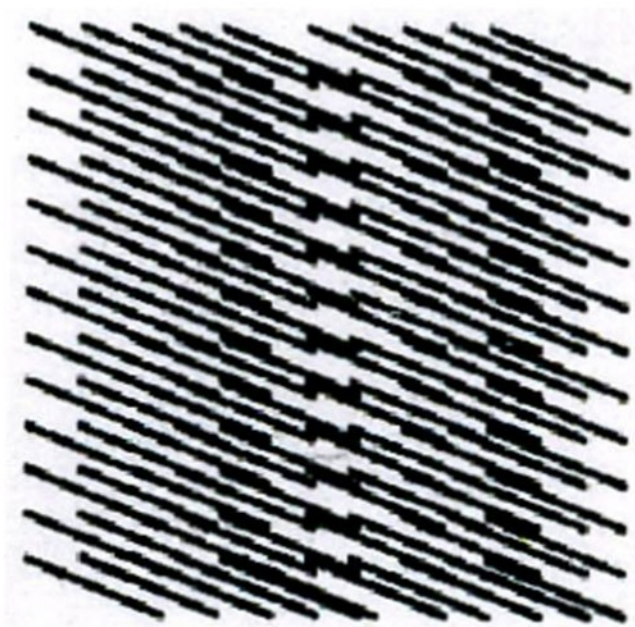
*speechless 6*

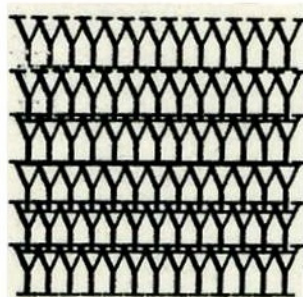
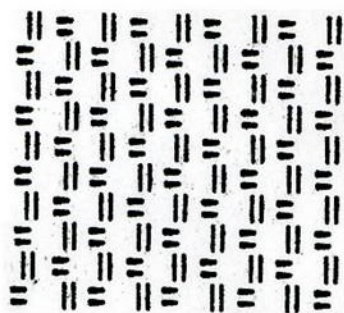
Jen Bervin









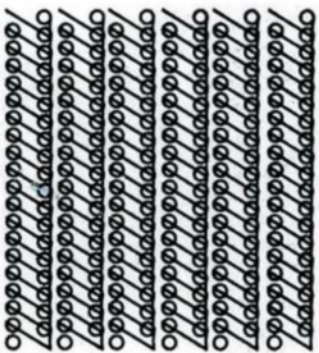


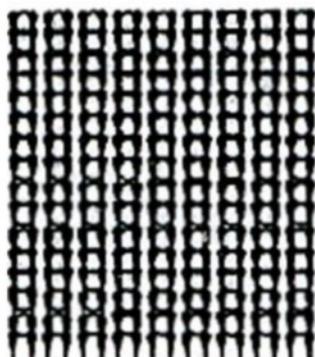
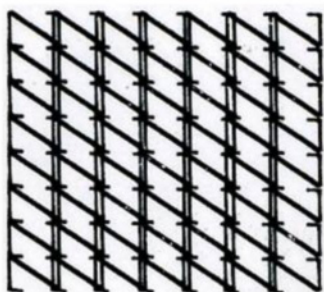


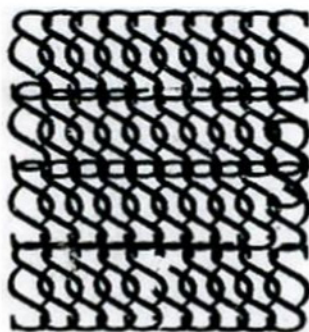


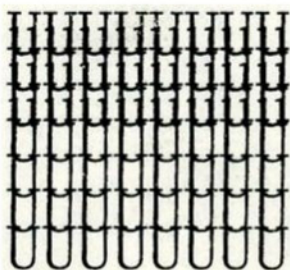


07 07 07 07 07 07  
/007/007/007/007/007/0  
07/007/007/007/007/007  
/007/007/007/007/007/0  
07/007/007/007/007/007  
/007/007/007/007/007/0  
07/007/007/007/007/007  
/007/007/007/007/007/0  
07/007/007/007/007/007  
/007/007/007/007/007/0









I typed these works on a Brother Correctronic 50 typewriter. I think of them as scores to be performed on a loom or with needle and thread. All of them were made following intensive time spent weaving cloth structures on the loom but refer back to draft notation, the pre-weaving diagrams a weaver creates or consults. They were inspired by Anni Albers' typewriter studies from Black Mountain College (the impetus for my desire to study weaving). It was quickly apparent to me that her profound understanding of cloth structure gave her a unique perspective on the gridded space the typewriter offers.

—Jen Bervin, June 2009

coming soon: Jennifer Scappettone, Bob Cobbing, Lawrence Upton,  
Dirk Kreker, Michael Yip and more.  
this issue: front cover by Jen Bervin



*speechless* 6  
edited by derek beaulieu

*speechless* is dedicated to the dissemination and discussion  
of visual and concrete poetry.

Submissions are welcome.

#2, 733-2<sup>nd</sup> Avenue NW | Calgary Alberta | Canada | T2N 0E4  
derek@housepress.ca